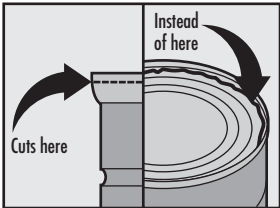




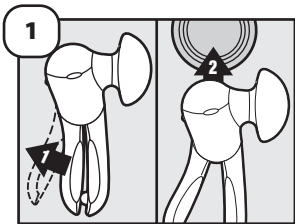
**GOOD  
GRIPS<sup>®</sup>**

**USE & CARE**

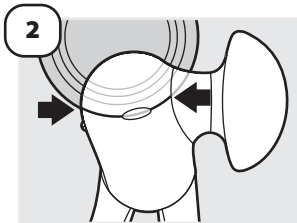
OXO's side-cutting Can Opener cuts below the can edge, leaving no sharp edges on the can or lid. Our easy-to-turn, side-wind knob requires less force and features OXO's non-slip, comfortable grip. The stainless steel cutting wheel penetrates the outside seal of the can, so the lid won't fall into your food. Use the lid pliers for no-touch can lid removal. Enjoy a safe, hygienic and easy way to open small and large cans.



Unlike traditional can openers, a smooth cut is made on side of lid.



**Open handle. Move opener against can.**



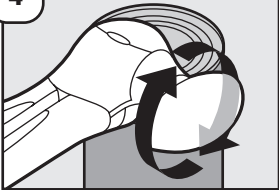
**Align top of can with curve on top of opener.**

**3**



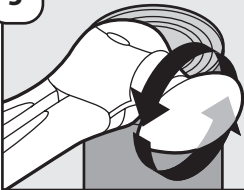
**Close handle to begin cut.**

4



Turn knob clockwise until there is a decrease in resistance.

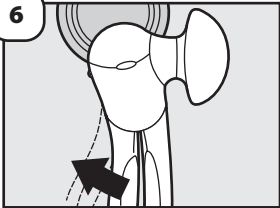
**5**



Turn knob counter clockwise one turn  
to release lid.

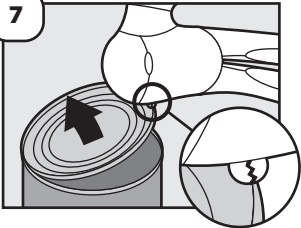


**6**



**Open handle to release can.**

7



Use lid pliers to remove lid.